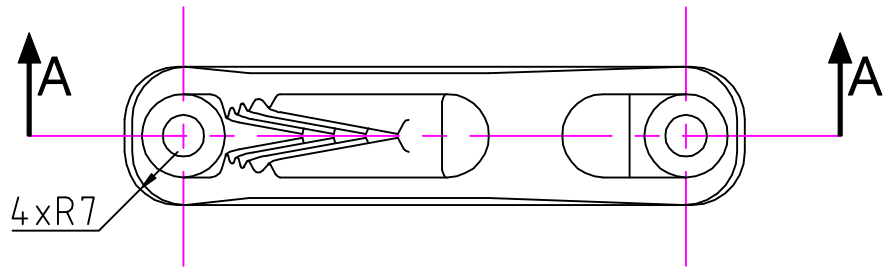
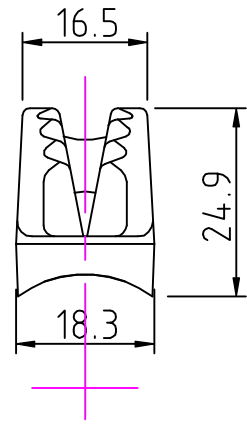
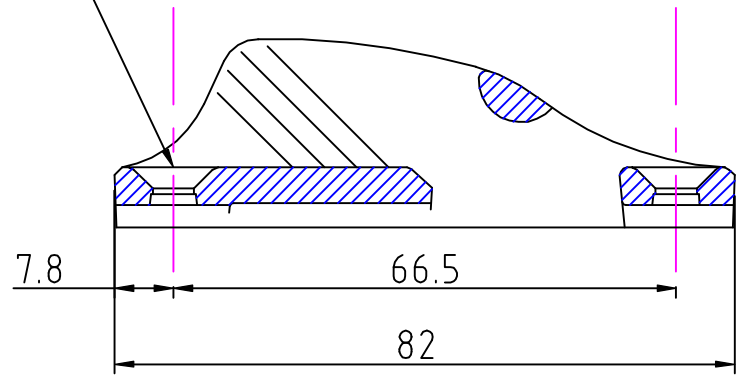
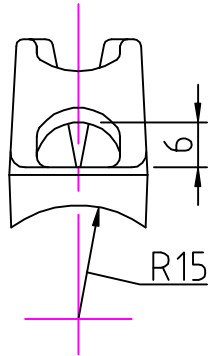


Notes: -  
For marine applications, use a silicone sealant or a bedding compound to avoid electrolytic action between the cleat and metal fastenings.

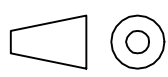
2 Holes  $\phi 5.5$   
countersunk  $\phi 10.0 \times 90^\circ$

Section 'AA'



Clamcleats Limited  
Watchmead  
Welwyn Garden City  
Hertfordshire AL7 1AP  
England

Telephone +44 (0)1707 330101  
Fax +44 (0)1707 321269  
<http://www.clamcleat-rope-cleats.com>



Scale 1:1  
All dimensions in mm.

Issue: 2. May 1999  
ID702.dwg

Material:  
Diecast Aluminium

Installation Drawing for:-

**CL702**

Aluminium Boom Cleat